



THE PHILADELPHIA DISPATCHER

Official publication of the Philadelphia Division
of the Mid-Eastern Region,
National Model Railroad Association

September 1997
Volume 4, Number 3

Division Meet: September 20 in Chadds Ford at the Brandywine Junction hotel

The Philadelphia Division of the National Model Railroad Association is pleased to announce that it will be conducting a meet on Saturday, September 20, at the Brandywine Junction convention hotel, the Chadds Ford Ramada Inn, in Chadds Ford. (Please see the Brandywine Junction convention insert for a map and directions.)

The meet will begin at 10:00 a.m. in the hotel's state-of-the-art auditorium. All Division members are encouraged to attend and bring a friend. Entrance to the meet will be free to all Division members. All others will be charged a nominal \$3.00 admission fee.

We are pleased to have two exceptionally qualified clinicians for our September meet. The Mid-Eastern Region president, Bill Gruber, MMR, will present a clinic on his Reading Lines model railroad, which has been featured in *Model Railroader*, *Railroad Model Craftsman*, and the *NMRA Bulletin*.

Our own Mike Rabbitt will present his clinic on the Upper Merion & Plymouth Railroad, the same clinic he will also be presenting at the convention. We may even have available a sample of the convention car, an Upper Merion & Plymouth hopper.

The meet will include a presentation on the convention and introductions of all the staff members. There will be a question-and-answer period, so if you have any questions on the convention, make sure you attend the meet.

We will also be recruiting volunteers

for the convention. Volunteers are needed in the areas of security, registration, clinician introductions, ushers, etc. Volunteers will be asked to serve minimum hours and it should not interfere with participation in most of the convention. All volunteers who sign up at the September meet will receive a Brandywine Junction '97 baseball cap there. The limited-edition cap features the BJ '97 logo.

We will be offering **two** contests at the meet. One contest will be a Conrail locomotive contest, in honor of our soon-to-be-fallen, local flag. Any scale is welcome. The winner will be chosen by popular vote and will receive first choice of the available door prizes at the meet.

Our second contest is a tongue-in-cheek contest (model railroading *is* fun.) The winner of this contest will also be by popular vote and will be for the best locomotive paint scheme that combines the elements of Conrail's paint scheme with one of its two current suitors (CRSX or Norfolk Northeastern, for instance). The winner of this contest will receive a *free* basic registration to the convention. That's a thirty-dollar value! If you win and are already signed up for the Convention, we will issue you a refund, additional tours, or a credit in the company store. Again, any scale of locomotive is welcome.

There will be no flea market tables available at this meet, nor will food be available. There are, however, many fine eating establishments in the vicinity of the hotel.

The meet is expected to conclude by 1:00 p.m., with layout tours to follow. A layout map will be available at the meet.

Meet Me at the Junction

Our column keeping members up to date on Brandywine Junction '97, the Mid-Eastern Region 1997 Fall Convention, sponsored by the Division.

We will let the center spread serve as our entry in this column this month. Suffice to say that the Division is poised to host the biggest model railroad event of 1997 to be held on the eastern seaboard. The plans are coming together splendidly and the convention should be one of the finest MER conventions ever held. Take a close look at the flyer, and I am sure you will find at least some events of interest to you. If you have never been to a MER convention before, then this is the one to attend, especially because it is in your backyard and you will see lots of familiar faces. For those who may be unfamiliar with a Region convention such as this event, you should be aware that pre-registration *is* required. **In order to attend any of the clinics, tours, or other events, with the exception of the Sunday train show, you must register for the convention.** Unlike our normal Division meets, walk-ins are not permitted unless you first register. While you could wait until Friday or Saturday and register at the convention, it is likely that most

continued on page 4

From the Superintendent

BY JOHN NAWN, DIVISION SUPERINTENDENT

The Conrail merger application is currently under review by the Surface Transportation Board (STB). By the time our March meet rolls around again we may be close to knowing who gets what. I hope you were trackside during the warm summer months and recording this history in the making. Or perhaps, you're glad to see Conrail go. Either way, it sure keeps things interesting and opens up a whole host of modeling opportunities.

Speaking of opportunities, the Division is about to offer the membership an opportunity that hasn't been this close in about twenty years. That would, of course, be the Brandywine Junction convention. You will find the BJ '97 flyer in the center of this issue of the *Dispatcher*.

Suffice to say, don't miss this unprecedented opportunity to experience the best of model railroading.

Continuing on the opportunity theme, don't forget about our reduced fee program for combination National/Region/Division membership. We will continue to hold our combination rate at \$35.00 for all three right through the Convention, even though National has raised its rates by \$2.00 effective October 1 (\$43.00 for all three if purchased separately). Many members have already taken us up on the offer; what are you waiting for? Avoid the National increase; eight bucks buys a lot of knuckle couplers. Contact the Clerk for details.

Our September meet promises some excellent clinics, and I hope to see a lot of you there.

It of course will be our last "normal" meet for the year, with our traditional November date superseded by the convention. Don't forget about our November Train Show & Sale either. Many tables have already been sold with a unique cross section of manufacturers, distributors and dealers. There will also be a minimum of three layouts at the show including the Division module team, the EBT On3 layout and at least one other.

In all seriousness, we do have a need for a number of volunteers at the convention. The staff has been working very hard to make this event a success and

some additional volunteers to fill in where needed would greatly assist us in meeting our objectives. Besides, you will earn volunteer credits toward your Association Volunteer certificate in the Achievement Program.

The Module Team has a very busy schedule approaching including an appearance at the December Greenberg's Show, our annual appearance at the East Coast Hobby Show in March, and an appearance at the GATS show at the end of November. Incidentally, this GATS show is also cosponsored by the Division, but more on that in our next issue. The last time the GATS show was in Philly and cosponsored by the Division, we had the "Blizzard of the Century"; November is still in the Hurricane season, isn't it? The Module Team will also be up and running throughout the entire convention.

Over the last five years, the officers and I have striven to bring the membership a continually improving model railroad/meet program, and with the cooperation and encouragement of the members, I believe we have been successful. We view the upcoming convention as the culmination of those efforts. And accordingly, we trust we will have your participation once again.

However, we must ask for an additional favor at this time. The financial success of the Convention is intimately tied to many things, including the number of rooms rented at the convention and the number of meals sold for the taste-of-Philly buffet. If you are planning on attending the convention, and I hope you are, consider taking a room at the hotel for Friday and/or Saturday night. Most of the staff will be staying over and the late-night "clinics" get real interesting. Consider also joining your fellow Division and Region members at the Saturday evening buffet. No speeches, no program, no seating charts and no rubber chicken. Where else can you get all-you-can-eat cheesesteaks for fifteen bucks?

That's all for this month. See you in September and see you at the convention. Thank you for your continued support.

THE PHILADELPHIA DISPATCHER

Official publication of the Philadelphia
Division, Mid-Eastern Region,
National Model Railroad Association

Editor

Nathan Ashby-Kuhlman
1226 Linwood Ave.
Norristown, PA 19401-4211
(610) 279-1646

Submissions: The PHILADELPHIA DISPATCHER welcomes any model railroad- or railroad-related material. Members are encouraged to send in articles, letters to the editor, reviews, etc. Submissions are preferred typed, double-spaced. The editor reserves the right to, when necessary, paraphrase small portions of the text in order to fit the space available.

Next issue: November 1997. Due out mid-October. Deadline: October 1.

Membership: \$3.00 per year. Neither NMRA nor MER membership is required, although recommended. Address all membership applications, renewals, address changes, etc. to the Clerk. If the date in the upper-right corner of your mailing label is highlighted, your membership will expire soon. Please pay at the next meet or mail payment to the Clerk. Make checks payable to "Philadelphia Division, NMRA."

Division Personnel:

Superintendent

John Nawn
144 Laurel Road
Sharon Hill, PA 19079-1322
(610) 461-8644

Assistant Superintendent

Steve Salotti
46 Meadow Road
Collegeville, PA 19426
(610) 489-1940

Clerk

Eric Dervinis
632 Bob White Road
Wayne, PA 19087-2305
(610) 688-6113
ericdlw@aol.com

Treasurer

Mike Hazzard
12 Pickering Court
Downingtown, PA 19335-1753

Achievement Program Coordinator

Dave Messer, M.M.R.
263 Mingo Road
Royersford, PA 19468-3112
(610) 948-2191

Module Team Foreman

Tom Cancelmo
238 Jackson Avenue
Lansdowne, PA 19050
(610) 259-7216

Mid-Eastern Region, N.M.R.A.

13212 Bellevue Street
Silver Spring, MD 20904-1703
(301) 572-2482
Dues: \$8.00 per year

National Model Railroad Association

4121 Cromwell Road
Chattanooga, TN 37421-2119
(615) 892-2946
Dues: \$30.00 per year

Brandywine Junction '97

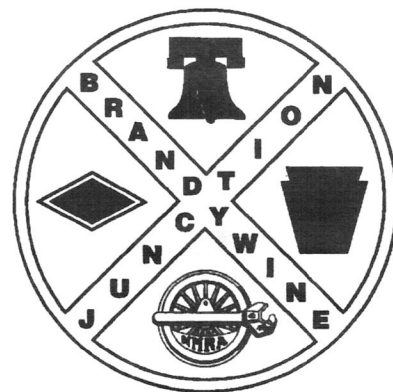
Mid-Eastern Region, NMRA

Fall 1997 Convention

Chadds Ford, PA

November 7-9, 1997

Hosted by the Philadelphia Division



The Philadelphia Division is proud to sponsor the Fall 1997 Mid-Eastern Regional Convention which will be held on November 7,8,9 in the beautiful and historic Brandywine Valley of southeastern Pennsylvania. Just a few minutes from Interstate 95 and the Pennsylvania Turnpike, Brandywine Junction '97 will be hosted by the Chadds Ford Ramada Inn. With national-caliber clinics, rare prototype tours and fan trips plus a host of regular and special MER Convention activities, Brandywine Junction '97 will have something for everyone!

Visit our web site at: <http://www.TFS.NET/~JASHAW/NMRA/Regions/BJintro.html>

Clinics

BJ'97 will feature clinics which cover a broad spectrum of modeling and prototype interests. However, given the interests and expertises among members of the MER and the Philadelphia Division, you'll find that heavy industrial railroading and associated industries as well as railroad operations will be featured. Among the many individuals who have agreed to present clinics are:

- Dean Freytag: *Improving Walthers Steel Mill and Unusual Railroad Cars*
- Bill Schaumberg: *Making a Scene - Part II*
- Bob Charles: *Town Meeting - A Conversation with the President*
- Mike Rabbitt: *Upper Merion and Plymouth RR and Cheap Industrial Buildings*
- Jim Hertzog: *Modeling the Reading Railroad, Shamokin Division*
- Ken McCorry: *Operations on the Central Region, Northern Division, PRR*
- Dave Messer: *Planning the PRR - Northern Division (as featured in RMC)*
- John Teichmoeller: *Carferries and Carfloats I Have Known*
- Bill Ataras: *Signaling Practices on Prototype and Model Railroads*
- Paul Backenstose: *We Dig Coal*

Prototype Tours

Three prototype tours are planned for BJ'97 for Friday and Saturday:

SEPTA's Frazer Shops. This tour is an op-

portunity to see up close the operations of SEPTA's Frazer shops on the famous Pennsy Main Line. Scheduled for Friday, November 7, it is a \$15 extra-fare bus trip and is limited to 40 registrants.

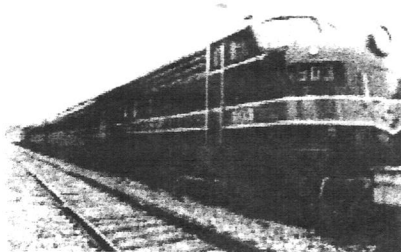
Lukens Steel in Coatesville. Ever wished you could see the inside of a steel mill? This trip represents a rare opportunity to take a guided tour of the famous Lukens Steel Mill in Coatesville, Pa. Also scheduled for Friday, November 7, this \$25 extra-fare bus trip, limited to 40, is expected to fill up fast.

PECO's coal-fired Eddystone plant. Scheduled for Saturday, November 8, this tour takes you inside and up close to see the operations of PECO's coal-fired generating station. Extra fare (\$15) bus trip, limited to 40.

Fan Trips

Scheduled for Saturday, November 8, Brandywine Junction '97's fan trips will feature the lines which truly did intersect at Brandywine Junction - the Pennsy's Octoraro Valley Branch and the Reading's Wilmington and Northern, which crossed at the Brandywine River just minutes from our hotel.

Pennsy Doodlebug #4662. Three bus trips will depart at approx. 9:00AM, 12:00 noon, and 3:00PM for a two-hour long fan trip on the PRR's Doodlebug #4662. This trip represents a rare opportunity to ride the Delaware Valley RR (ex-Octoraro Valley Branch) on the rarest-of-all type of equipment. Two photo run-by's are planned. Don't miss this one! Only 60 passengers for each run. Extra-fare, bus trip (\$30).



Reading FP-7's. Self-scheduled trips are planned for the nearby tourist line Brandywine Scenic (ex-Reading's Wilmington &

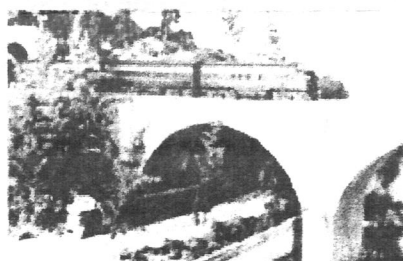
Northern). BJ'97 has arranged for the Brandywine Scenic to pull their passenger trains with the two Reading FP-7s. Brandywine Scenic will be running these trains four times: 11AM, 12:30PM, 2PM, and 3:30PM. Tickets and maps will be available at our hotel. (\$6.00/adult/ \$4.50/child).

Home Layout Tours

BJ'97 will feature over 34 home layouts, both large and small, several of which have been featured recently in the model railroading press. Registrants will provide their own transportation; a comprehensive tour guidebook will be provided. Among those you can choose to visit are the rail-

roads of: Ken McCorry, Bill Kachel, Dave Messer, Mike Rabbitt, Paul Backenstose, Bruce Saylor, Chris Yocum, Charles Carangi,

Ted Wilkes, Doug Robb, Charles Chandler, John Lofland, Charles Huth, Steve Salotti, Jim Dalberg, and Bob Davis.



Convention Car

The convention car for Brandywine Junction '97 is an Athearn 70 ton offset 4 bay hopper based on the prototype Upper Merion & Plymouth quad hoppers, which the UM&P bought used from the Reading. These cars were used both for in-plant service and for interchange carrying the raw ingredients for making steel – iron ore, coal, and limestone. Like the prototype, the model will be painted black with white letter, and will be offered in three numbers for the following prices: \$10 for one car, \$28 for a three-pack. The Upper Merion & Plymouth is a short industrial line which served the Alan Wood Steel complex (currently Lukens) and associated heavy industries on both sides of the

Schuylkill River at Conshohocken, Pa. Mike Rabbitt will be presenting a clinic on this fascinating industrial short line. These cars will make a distinctive addition to your fleet, whether you have a steel mill, or just move general freight on your layout.

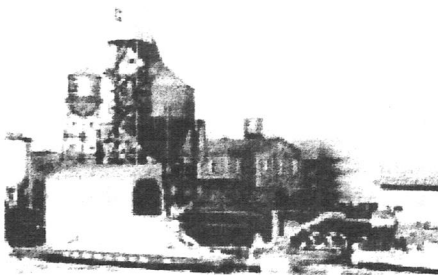
Operations Call Board

Following in the footsteps of the highly successful Layout Lottery at Jersey Limited '96, BJ'97 will be offering the Operations Call Board. For the extra fare option, registrants will be assured of an opportunity to operate on one of several local high quality layouts; the designated layout will be determined by lottery. First-time operators are particularly encouraged to participate. Saturday evening, extra fare (\$18), van transportation is provided.

Contests

Judged contests in the normal classes, as well as the Blue Lantern Award for branch line equipment, will be held at BJ'97. NMRA contest rules have been modified recently; the number of points awarded for prototype conformity has been increased and the number awarded for scratchbuilding has been decreased. Ntrak modules set up for Plug-N-Play will be judged at the

module setup site; however, N scale modules which are part of a module should be brought to the Ramada for judging.



Live Auction

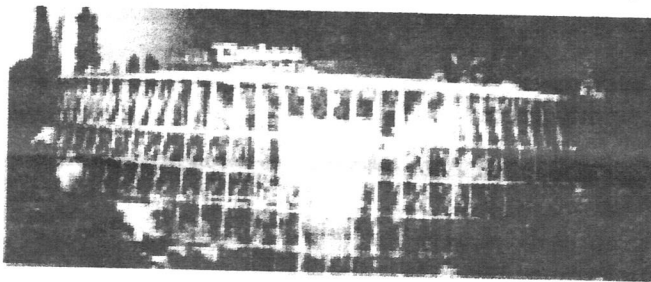
Brandywine Junction '97 will feature a live auction. Merchandise can be deposited at the Company Store. As the seller, you can bring as many items as you wish; there is no limit. You can also state a minimum price you'd be willing to accept. As the buyer, you must bring your checkbook and/or cash (lots of it!); we cannot accept credit cards. The Philadelphia Division will receive 10% of the purchase price of the items which are sold through the auction. More detailed Auction Rules will be distributed in the registration packet.

Buffet

Rather than a traditional banquet as we've come to know them, BJ'97 will feature a come when you want, with whom you want, and eat all you can eat "The Taste of Philly" buffet – featuring Tastykakes, soft pretzels, and *real* Philly cheese steaks. In other words, real Philly health food! Awards activities are planned to begin at the conclusion of the buffet.

Plug-N-Play

BJ'97 is being held at the same time as the Eastern Region Ntrak Convention, Plug-N-Play. Plug-N-Play is located at a hotel and module setup facility outside of West Chester, Pa, just minutes north of BJ'97. Registration for either convention enables a registrant to attend activities at the other convention at no additional cost. A free shuttle between convention sites will be running hourly.



Off-Line Activities

Exciting off-line activities are planned including visits to the world-famous Longwood Gardens, Winterthur, and the Brandywine River Museum (featuring works of the Wyeth family and Howard Pyle). Additional sites may include the Hagley Museum and the Franklin Mint. Since most of these locations are within very close proximity of the BJ'97 headquarters hotel, we're preparing road maps and directions to enable guests to self-schedule their own visits to enable them to spend as much time as they wish at these unique sites.

In addition, several on-site activities and clinics are planned for Young and New Rails including:

- Basic scenery construction
- Shake-the-box kit construction
- Basic switching operation
- An Operations Layout for Young Rails
- The Philadelphia Division specialty – the Kidz Corner

SIGs

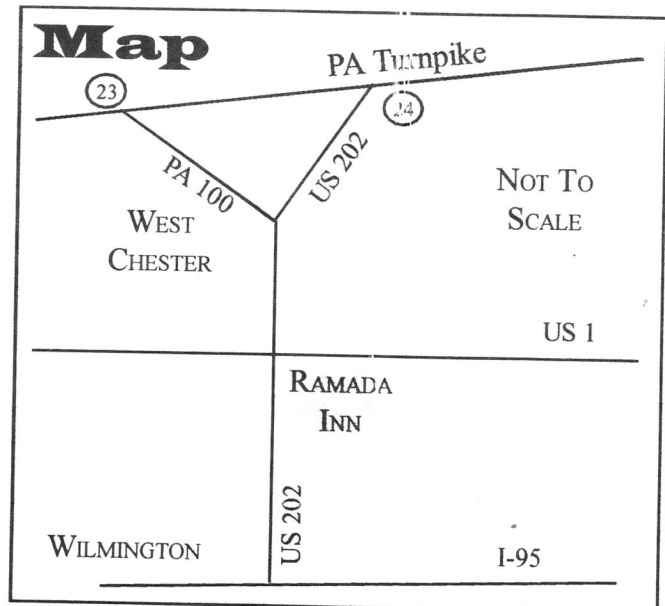
We anticipate a large turnout of members of the Layout Design and the Railroad Industries SIGs and a number of activities are currently being planned.

Directions to Brandywine Junction '97

From the South: Follow I-95 North into Wilmington, exit onto US202 North. Continue on 202N into Pennsylvania until the intersection with US1. BJ'97 and the Ramada are on the near right corner of the intersection of 202 and 1. Total driving time from Wilmington, approx. 10 to 15 minutes.

From the West: Exit from Penna. Turnpike at exit 23, Downingtown, and head south on PA100. PA100 joins US202 South at West Chester. Continue on 202S to intersection with US1. BJ'97 and the Ramada are on the far left corner; turn left onto US1East, and immediately turn right into the Ramada. Total driving time from exit 23 of the Turnpike is approx. 30 minutes.

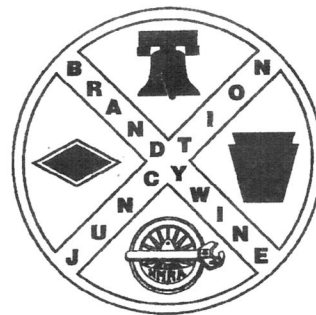
From the East: Exit from Penna. Turnpike at exit 24, Valley Forge, and head south on US202. Continue on 202S beyond West Chester until the intersection with US1. BJ'97 and the Ramada are on the far left corner; turn left onto US1East, and immediately turn right into the Ramada. Total driving time from exit 24 of the Turnpike is approx. 45 minutes.



Brandywine Junction '97 Registration Form

Mid East Region, NMRA Fall Convention

November 7, 8, & 9 1997 Chadds Ford, PA



Names as they will appear on the badges:

Street: _____

City: _____ State: _____ ZIP: _____

Phone: _____ NMRA # _____ MER # _____

Full Registration	_____ @ \$30.00	_____	
Non-NMRA Member	_____ @ \$35.00	_____	
Spouse	_____ @ \$10.00	_____	
Children (under 12)	_____ @ \$5.00	_____	
Taste-of Philly Buffet (Adult)	_____ @ \$15.95	_____	
Taste-of Philly Buffet (Child)	_____ @ \$5.00	_____	
Convention Car (Single)	_____ @ \$10.00	_____	
Convention Car (3 Pack)	_____ @ \$28.00	_____	
Additional Convention Pin	_____ @ \$3.00	_____	
Convention Shirt	_____ @ \$10.00	_____	S M L XL XXL
Operations Call Board	_____ @ \$18.00	_____	
Septa's Frazier Shops	_____ @ \$15.00	_____	
Lukens Steel	_____ @ \$25.00	_____	
PECO's Eddystone Station	_____ @ \$15.00	_____	
Doodlebug Trip	_____ @ \$30.00	_____	9AM 12PM 3PM
Brandywine Scenic Trip (Adult)	_____ @ \$6.00	_____	11AM 12:30PM 2PM 3:30PM
Brandywine Scenic Trip (Child)	_____ @ \$4.50	_____	11AM 12:30PM 2PM 3:30PM

Total Enclosed _____

Make Checks payable to: Brandywine Junction '97, P.O. Box 741, Paoli, PA 19301
For convention information call 610-461-8644

(tear off and mail directly to Ramada Inn)

CHADDS FORD RAMADA INN & CONFERENCE CENTER

Route 1 & Route 202

1110 Baltimore Pike

Glen Mills, PA 19342

1-800-228-2828(national); 1-610-358-1700 (local)

For: NMRA Fall Convention November 7-9, 1997

Reserve by: October 7, 1997 to ensure a room

Rate: \$75.00 + 8% tax (Single/Double); \$85.00 (Suite - sleeps up to four)

NAME _____

PHONE _____

ADDRESS _____ CITY _____ STATE _____ ZIP _____

ARRIVE ON _____ DEPART ON _____

Please reserve _____ number of rooms for _____ people in each room. _____ Check/Money Order Enclosed
-- OR --, I will guarantee with Credit Card (American Express, Diners Club, Visa, Master Card, or Discover)

Credit Card Number _____ Exp. Date _____ Amount _____

Signature _____ Should I fail to honor my reservation and not cancel 24 hours prior to my expected arrival, I authorize Chadds Ford Ramada Inn & Conference Center to charge my account for one night's deposit and all applicable taxes. Check out time is 12:00 noon. Rooms may not be available for check in until after 3:00 PM.

Brandywine Junction '97

PRELIMINARY CONVENTION TIMETABLE

FRIDAY, NOVEMBER 7

- Lukens Steel Tour departs
Lukens Steel Tour returns
- 1 p.m. CLINICS SESSION I
Steve Salotti: Yard Planning and Operation on the Perkiomen Valley
Ken McCorry: Operations on the Central Region, Northeast Division, PRR
Jim Moir: Opportunities in Operation on a Double Deck
- 1:30 p.m. Frazer Shops Tour departs
- 2:30 p.m. CLINICS SESSION II
Dave Messer, MMR: Planning the PRR Northeastern Division
Herb Gishlick: Modern Commuter Rail Operations on Your Model Railroad
Rob Kuhlman: Geology for Model Railroads
- 4 p.m. Frazer Shop Tour returns
- 4 p.m. CLINICS SESSION III
Bill Ataras: Signaling Practices on Prototype and Model Railroads
Win Gross: A Look Back at Pennsy Diesels, Cars & Cabin Cars
Jim Hertzog: Modeling the Reading Railroad, Shamokin Division
- 7 p.m. Home layouts open (Session I)
- 7 p.m. CLINICS SESSION IV
Mike Rabbitt: Upper Merion & Plymouth Railroad
Matthew Nawn: History & Development of the Interurban Car
Bill Schaumburg: Making A Scene — Part II
- 8:30 p.m. CLINICS SESSION V
Dean Freytag: Improving the Walthers Steel Mill
John Johnson: Freight Cars of the PRR
Jim Dalberg: Operations on the New Jersey Northern
- 10 p.m. CLINICS SESSION VI
Dean Freytag [continued]
John Teichmoeller: Car Ferries & Carfloats I Have Known
Bob Charles: Town Meeting — A Conversation with the NMRA President
- 10 p.m. Home layouts close
- ### SATURDAY, NOVEMBER 8
- 8 a.m. Home layouts open (Session II)
- 8:30 a.m. CLINICS SESSION VII
Bill Ataras: Signaling Practices on Prototype and Model Railroads
Rick Malone: CTC & Signals Made Easy
Terry Nesbit: Signal & Classification Lanterns and Lamps
- 8:30 a.m. PRR Doodlebug Fantrip No. 1
- 9 a.m. PECO Energy Eddystone Generating Station tour departs
- 10 a.m. CLINICS SESSION VIII
Dick McEvov: Handmade Turnouts by the Dozen

- Jim Dalberg: Operations on the New Jersey Northern
- Bill Schaumburg: Making a Scene — Part II
- 11 a.m. Brandywine Scenic Fantrip No. 1
- 11:30 a.m. PECO Energy tour returns
- 11:30 a.m. CLINICS SESSION IX
Paul Backenstose: We Dig Coal
Jim Hertzog: Modeling the Reading Railroad, Shamokin Division
Monroe Stewart: Scratchbuilding in N Scale
- 11 a.m. PRR Doodlebug Fantrip No. 2
- 12 p.m. Home layouts close
- 12:30 p.m. Brandywine Scenic Fantrip No. 2
- 1 p.m. Home layouts open (Session III)
- 1 p.m. CLINICS SESSION X
Matt Chibbarro: Creative Model Railroads in Small Spaces
Rob Kuhlman: Geology for Model Railroads
Ken McCorry: Operations on the Central Region, Northeast Division, PRR
- 2 p.m. Brandywine Scenic Fantrip No. 3
- 2 p.m. PRR Doodlebug Fantrip No. 3
- 2:30 p.m. CLINICS SESSION XI
Dean Freytag: Unusual Railroad Cars
Bob Jans: Real Model Railroaders Don't Fear Hidden Track
Stan Knotts: Oil Refineries and Their Railroad Traffic
- 3:30 p.m. Brandywine Scenic Fantrip No. 4
- 4 p.m. CLINICS SESSION XII
Dean Freytag [continued]
Skip Houston: PRR Prototype Operations
Gene DeOreo: Industries and Railroads of the Brandywine Valley Area
- 5 p.m. Home layouts close
- 5 p.m. Taste of Philly Buffet opens
- 7 p.m. Taste of Philly Buffet closes
- 7 p.m. Awards ceremony/presentations
- 7:30 p.m. Operations Callboard
- 8:30 p.m. Live Auction
- ### SUNDAY, NOVEMBER 9
- 9 a.m. MER Annual Meeting
- 9 a.m. CLINICS SESSION XII
Mike Rabbitt: Cheap Industrial Buildings
John Teichmoeller: Car Ferries & Carfloats I Have Known
- 10 a.m. Train Show & Sale Opens
- 10:30 a.m. CLINICS SESSION XIII
Win Gross: A Look Back at Pennsy Diesels, Cars & Cabin Cars
Paul Backenstose: We Dig Coal
Bob Charles: Town Meeting — A Conversation with the NMRA President
- 1 p.m. Home layouts open (Session IV)
- 4 p.m. Train show closes
- 5 p.m. Home layouts close

Meet Me at the Junction

continued from page 1

of the tours will be sold out by then. In fact, if you have any interest in attending the Lukens Steel tour or riding the PRR Doodlebug, register soon, as these tours are filling quickly.

If you do sign up for the convention, attendance at Sunday's train show is of course free. If you do not make it to the convention, then try to at least attend the Train Show on Sunday. Entrance to the Train Show will be open to the general public, beginning at 11:00 a.m., for a nominal \$3.00 fee (children under 12 free, \$10.00 family maximum).

The Brandywine Junction staff will be having its final general staff meeting promptly at 8:30 a.m. on September 20 in the auditorium at the Chadds Ford Ramada Inn. The September Division meet will follow in the same location at 10:00 a.m. All staff are requested to attend, and any other interested Division members are welcome to attend. The staff will be receiving a separate mailing on the meeting.

Timetable

DIVISION EVENTS

Philadelphia Division Meet. September 20. Chadds Ford Ramada Inn, Chadds Ford. 10:00 a.m. Free to members. Nonmembers: \$3. See page 1 and the Brandywine Junction insert.

Brandywine Junction '97. November 7-9. Chadds Ford Ramada Inn, Chadds Ford. See the BJ '97 insert in this issue.

BJ '97 Train Show and Sale. November 9. 11 a.m. to 4 p.m.

Philadelphia Division Meet. March 28, 1998. St. Alban's Church, Newtown Square. Will include the annual business meeting and officer elections.

MODULE TEAM SHOWS

Great American Train Show. November 29-30. Ft. Washington Expo Ctr.

East Coast Hobby Show. March 14-16, 1998. Fort Washington Expo Center.

OTHER EVENTS

November 7-9. Plug-N-Play '97. The Eastern Region N-Trak convention. West Chester Holiday Inn. Free to all BJ '97 registrants, with a free shuttle between the two hotels.

Great American Train Show. November 29-30. See above. Cosponsored by the Division.

May Meet Report

BY ERIC DERVINIS

On May 17, the Division held a joint meet with the New Jersey Division at Camp Haluwasa in Hammonton, New Jersey. From 10 a.m. to 4 p.m., volunteers from the camp ran a full schedule of activities. Members received guided tours of the Haluwasa Shoreline RR, tried pumping a handcar and "worked on the railroad." There is a five-year project to regauge the railroad from 24" to 30", because it has acquired a set of wider cars from a defunct gunpowder plant.

Following the New Jersey Division business meeting, John Nawn presented the BJ '97 slide show. The local N-Trak club displayed its modular railroad. An S-scale modular railroad and a hand-built outdoor railroad were running all day.

THE PHILADELPHIA DISPATCHER

Official publication of the Philadelphia Division
of the National Model Railroad Association

P.O. Box 741
Paoli, PA 19301-0741

Do you need to renew?

INSIDE: BRANDYWINE JUNCTION '97 CENTER SPREAD AND REGISTRATION FORM