



# THE PHILADELPHIA DISPATCHER

Official publication of the Philadelphia Division  
of the Mid-Eastern Region,  
National Model Railroad Association

November 2000  
Volume 7, Number 4

The Philadelphia Division is pleased to announce that we will be conducting a meet on Saturday, November 4<sup>th</sup> at the Fairview Village Church of the Nazarene. The church is located at 3044 W. Germantown Pike in Fairview Village, PA. This is the normal location for our November meet. Please note that we will be in the barn, which is the building closest to Germantown Pike and on the right side of the campus when facing from the highway. The meet will begin at 9:30 AM, with clinics starting at approximately 10:00 AM.

We are pleased to have an interesting variety of clinics for your enjoyment. Rick Spano will present a clinic on the "Surrealistic British Columbia Railway". This interesting and extremely scenic line does all those things we are told as model railroaders that the prototype doesn't do. These include going from tunnels directly onto spectacular bridges. You will find this clinic informative and entertaining. John Farquhar will also present his intriguing clinic entitled "Goo Gone and Graphite". This clinic will be full of practical and useful ideas for you to use to improve your equipment and increase it's

reliability. You are sure to find some good ideas to take back to your own railroad.

We will also have many of our regular features at this meet. The popular vote contest for the meet will be on-line structures. This can be an industry, station, wayside building or any other structure that would be found along a rail line. There will be another raffle of donated items as a fundraiser, plus door prizes. Dealer tables are available by contacting Steve Salotti at 610-489-1940.

After the meet, there will be several layouts available in the afternoon for you to tour. In addition, the list of layouts throughout the Delaware Valley area is now available at local hobby shops. Please be sure to thank the layout hosts and use your best etiquette.

Coffee and donuts will be available for purchase during the meet with proceeds going to the division. There are many fast food restaurants in the area for you to use for lunch. We also invite you to visit the fine Hobby Shops in the Lansdale area, and please remember to thank them for their support of the Philadelphia Division.

## Roster to be Updated

Due to some problems that were experienced during the transfer of the database after the last election, we have been finding a number of problems with our records. These include wrong expiration dates and missing NMRA/MER member numbers. Please take a moment to look at your current membership card to see if it matches the date on the mailing label. We will also be checking numbers so please have your cards available at the next meet you attend. Thanks for your help and understanding.

## Important announcement

The officers of the Philadelphia Division are pleased to announce that we will be making a bid to host the 2006 National Convention! In order to make the bid we need a petition with 25 signatures from Division members. There will be a petition at the November meet for you to sign. You are not committing yourself to any particular area of responsibility, but do hope that you will plan to be involved. Please consider what part you would like to play in this exciting adventure, and add your name to the list!

With the turn of yet another season, we are once again at the beginning of the month known as National Model Railroad Month. The hobby press is full of ads for open houses at clubs across the nation. And even in these hallowed pages, we are pleased to offer you opportunities to visit some of the fine layouts in the Philadelphia area. (If you or your club would like to be included in future issues, please send the information to my attention and I will include it whenever space is available.)

Many are commenting on the lack of young people in our hobby. While we may argue over the reasons, it is clear we need to start getting more youth involved. With so many things competing for their time, doing so can be a daunting task. How about having a neighborhood open house, or bringing a son or grandson to the next meet. Or use the many club open houses as an opportunity to take the children out. Throw in a little lunch at the local fast food outlet and you can have a great day of bonding too boot. If we wait for others to do it, will it ever happen?

How about a trip trackside to try and kindle some interest? Just remember, kids like action. Try to find a location with enough trains or at least a nearby park or place to play safely while you wait for some traffic.

Can you remember what was the spark that ignited your own interest in trains? My earliest recollection of trains is when we would go to my Grandmother's house in Darby, just across the road from the Fells Naptha plant. There was a railroad (Pennsylvania Railroad main line) that ran just past it, and to this little boy from way out in the

country the constant parade of trains was absolutely fascinating. This was in the late '50s and early '60s, but I still remember it to this day. It's just too bad I didn't own a camera, besides, no one in my family had any interest in trains so they probably wouldn't have taken me over to the tracks anyway.

Another memory that has had an impact on my modeling was during the '60s. We lived in central Bucks County near Doylestown. On Saturday nights the New Hope and Ivyland Railroad would run steam mixed trains that ran just close enough to our house that I could hear the whistle blow in the distance on a clear calm night. From hearing that moanful wail, I decided to do some volunteering on the railroad. That lead to an opportunity to ride on the old Washington Terminal RS-1s they were using at the time. The RS-1 soon became my favorite type of locomotive, and guess which line had a large stable of them. We just never know what little incident will have a lasting effect on our lives.

From a modeling standpoint, I'd have to say that finding a copy of Model Railroader in a newsstand and seeing the work of some of the hobby greats like John Allen had a definite influence on my budding enthusiasm for model trains. That first layout in my parent's basement with massive 2 X 6 joists and sagging plywood roadbed wasn't very pretty and the trains derailed frequently, but it was the start of what has become a life long hobby.

Happy Railroading!

## THE PHILADELPHIA DISPATCHER

Official publication of the  
Philadelphia Division,  
Mid-Eastern Region,  
National Model Railroad Association

### Editor

Stephen F. Salotti  
46 Meadow Road  
Collegeville, Pa, 19426  
(610) 489 1940

**Submissions:** The PHILADELPHIA DISPATCHER welcomes any model railroad- or railroad-related material. Members are encouraged to send in articles, letters to the editor, reviews, etc. Submissions are preferred typed, double-spaced. The editor reserves the right to, when necessary, paraphrase small portions of the text in order to fit the space available.

**Next issue:** March 2001. Due out approx. Mar 10. Deadline: Feb 25th.

**Membership:** \$5.00 per year. Address all membership applications, renewals, address changes, etc. to the Clerk. If the date in the upper-right corner of your mailing label is highlighted, your membership will expire soon. Please pay at the next meet or mail payment to the Clerk. Make checks payable to "Philadelphia Division, NMRA."

### Division Personnel:

#### Superintendent

Tim Palmer  
529 Kohn Street  
Norristown, Pa. 19401  
(610) 275 3054

#### Assistant Superintendent

John A Nawn  
300 Sharon Ave.  
Sharon Hill, Pa. 19079  
(610) 461 8644

#### Clerk

Stephen F. Salotti  
46 Meadow Road  
Collegeville, PA 19426  
(610) 489-1940  
jmsfca@aol.com

#### Treasurer

Sam Parker  
449 Knowlton Road  
Media, Pa. 19063  
(610) 4940917

#### Achievement Program Coordinator

Dave Messer, M.M.R.  
263 Mingo Road  
Royersford, PA 19468-3112  
(610) 948-2191

#### Module Team Foreman

Tom Cancelmo  
238 Jackson Avenue  
Lansdowne, PA 19050  
(610) 259-7216

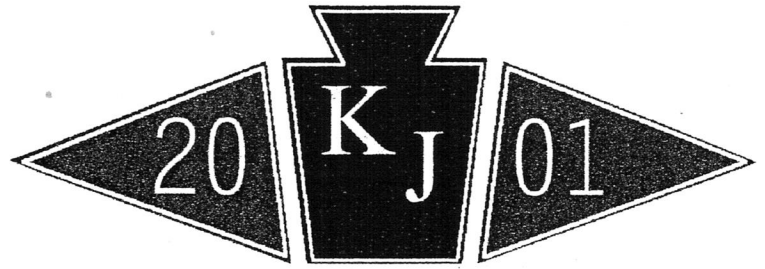
#### Mid-Eastern Region, N.M.R.A.

13212 Bellevue Street  
Silver Spring, MD 20904-1703  
(301) 572-2482  
Dues: \$8.00 per year

#### National Model Railroad Association

4121 Cromwell Road  
Chattanooga, TN 37421-2119  
(615) 892-2946  
Dues: \$34.00 per year

# Keystone Junction '01



Mid Eastern Region, NMRA  
Frazer, PA

March 29 - April 1, 2001

Hosted by the Philadelphia Division

---

The Philadelphia Division is proud to sponsor the Spring 2001 Mid-Eastern Regional Convention, which will be held on March 29<sup>th</sup> – April 1<sup>st</sup> in the beautiful and historic Great Valley of Southeastern Pennsylvania. Just a short drive from Interstate 95 and the Pennsylvania Turnpike, Keystone Junction '01 will be hosted by the Sheraton Great Valley Hotel. With national caliber clinics, rare prototype tours and fan trips, plus a host of regular and special MER Convention activities, Keystone Junction '01 will have something for everyone!

Visit our web site at: <http://www.kj2001.com>

## Clinics

KJ 2001 will feature clinics that will cover a broad spectrum of modeling and prototype interests.

- |                    |                         |
|--------------------|-------------------------|
| • Andy Sperandio   | Operations              |
| • Bill Schaumberg  | Tunnel Hill             |
| • John Armstrong   | Planning for operations |
| • Bob Charles      | Former NMRA President   |
| • Jim Hertzog      | Reading Lines Update    |
| • Mike Rabbitt     | Steel Mills             |
| • George Hughes    | DCC                     |
| • Paul Backenstose | Along the Maine Line    |
| • Dave Palmer      | Zoo Tower               |
| • Tim Palmer       | Railfanning the area    |
| • Roger Cason      | Scenery                 |
| • Steve Salotti    | TT&TO on the NYSW       |

In addition, there will be a hands on extra fare (\$10.00) DCC clinic on Friday morning. This will be an opportunity to work with various systems and see how easy and fun DCC can be. Participants will learn the basics of DCC and have a chance to practice their skills.

## Prototype Tours

There are many opportunities for you to view the prototype at KJ 2001. These include:

**SEPTA's Frazer Shops.** This tour is an opportunity to see up close the operations of SEPTA's Frazer shops on the famous Pennsy Main Line. Scheduled for Friday, March 30, it is a (\$15.00) extra fare bus trip and is limited to 40 registrants.

**Lukens Steel in Coatesville.** Ever wished you could see the inside of a steel mill? This trip represents a rare opportunity to take a guided tour of the famous Luken's Steel Mill in Coatesville, PA. Scheduled for Friday morning, March 30, this extra fare (\$25.00) bus trip, limited to 40 people, is expected to fill up fast.

**PECO's coal fired Eddystone power plant.** Scheduled for Saturday morning, March 31<sup>st</sup>, this tour takes you up close to see the rail operations of PECO's coal fired generating station. Extra fare bus trip (\$15.00) limited to 40 people.

### Fan Trips

Scheduled for Friday, March 30<sup>th</sup> and Saturday the 31<sup>st</sup>, KJ 2001's fan trips will feature something for fans of both of the roads that ran through the Great Valley area within a stones throw of our convention hotel.

**30<sup>th</sup> Street Station Tour:** This extra fare (\$10.00) Friday March 30<sup>th</sup> tour will include a train ride to 30<sup>th</sup> Street station, and a walking tour of this monument to the mighty Pennsylvania Railroad. The tour will include AMTRAK's CETC control center.

**New Hope & Ivyland Railroad:** This shortline railroad runs on an ex-Reading line through some of the best scenery in Bucks County. This Saturday March 31<sup>st</sup> extra fare (\$25.00) trip will include a tour of the railroad's shops and equipment collection, a ride on your choice of two steam runs, plus, as an added bonus, during the bus trip, 4 lucky names will be drawn for a cab ride in the locomotive! Box lunches will be available for this trip at \$5.00 each.

### Home Layout tours

KJ '01 will feature over 35 of the areas finest home layouts, both large and small, including several that have been featured recently in the model railroad press. Registrants will provide their own transportation: a comprehensive guidebook will be provided. Among those you can choose to visit are the railroads of: Ken McCorry, Dave Messer, Mike Rabbitt, Paul Backenstose, Jim Dalberg, Bill Blackburn, Charles Chandler, Steve Salotti, and many more.

### Convention Car

The convention car for Keystone Junction '01 is an LBF Models gondola based on the prototype cars owned by the Upper Merion & Plymouth railroad. These cars are used by the railroad to haul the steel products produced at the Lukens Steel plant in Conshohocken, PA. The cars will be available in three different numbers and can be purchased as singles at \$15.00 or in a three pack for \$40.00.

### Operations Call Board

Continuing the tradition of hands on activities, the Philadelphia Division is pleased to offer it's extremely popular Operations Call Board. For the extra fare option (\$18.00), registrants will be assured of an opportunity to operate on one of several local high quality layouts. First time operators are particularly encouraged to participate. We have added additional spaces, but this activity was one of the first to sell out at BJ '97, so don't delay. Three different time slots make it easy to fit this option into your schedule.

### Contests

Judged contests in the normal classes, as well as the Blue Lantern Award for branch line equipment, will be held at KJ '01. We encourage all members to bring out their best work and enter it in the various categories. This is an excellent opportunity for you to test your skill.

### Auctions

Keystone Junction '01 will have not one, but two opportunities for you to enjoy the fun and excitement of an auction. With both sponsored by the Philly Division, there will be a silent auction beginning on Thursday evening and running until approximately noon on Saturday. Then, in the evening after the Awards Presentation, there will be a live Auction conducted by our own former president of the NMRA, Mr. Bob Charles! The live auction will be limited in the number of items accepted for sale. Items to be entered in the auctions can be brought to the auction room starting at 6:00 PM on Thursday. As the seller, you can bring as many items as you wish for the silent auction: there is no limit. You can also state a minimum price you'd be willing to accept. As the buyer, you must bring your checkbook or cash (lots of it!); we cannot accept credit cards. The Philadelphia Division will receive 10% of the purchase price of the items that are sold through the auction. More detailed auction rules will be distributed in the registration packet.



## From the Superintendent

November is our month- National Model Railroading Month! During the next month, there are a variety of layouts and open houses open for everyone's enjoyment. The recent issues of Model Railroader, RMC, the Bulletin, and Model Railroading have good listings. Take a friend and show them what can be accomplished. Let's see if we can also strengthen our roster.

I'd like to thank everyone who assisted during the Delaware Transportation Festival, manning the Keystone Junction 2001 booth and answering questions. We had approximately 200-300 people stop by and ask about the spring convention. In case you missed it, there were a good number of federal and state agencies and private companies as well as several transportation/engineering groups displaying their wares. (The Philadelphia Airport was in the booth next to ours). Also, the Wilmington & Western Railroad brought #58, the Reading FP-7's were there for inspection/touring, and NS sent an engine as well. Very nicely done.

Juniata Junction '00 is now in the books. Once again we found out why MER stands for Most Enthusiastic Region. When the numbers come out, we'll have been the largest number of attendees for the tri-regional. The convention went well. There were a couple of clinics that were hands-on, and even one that was edible (Dinner in the Diner - veal and ham with salad). Railfanning the area was a highlight (I didn't attend Railfest since I was working). Everywhere you turned, you were treated to any number of trains. Probably the biggest disappointment had nothing to do with the convention or Railfest - Conrail/NS had not cut back the trees so your line of sight was severely limited at the curve. (Who

knows, maybe they will actually cut it back next time).

The drive back was very informative (I rode with Steve Salotti). Along the way, stops were made at every yard, siding, and steel mill we could find. The stop at Mt Union showed what a shame it is when you abandon equipment with the best of intentions of fixing it and can't. Standard Steel in Burnham had some very interesting trackage within the plant. There were also a few pieces sitting on a siding outside the plant behind a large scrap yard, which contains wheels, trucks, rail and plates. The siding contained several passenger cars, Army OB boxcars, a V1000, S-2, and several ex-AMTRAK cabooses. Also in Burnham was one of the layouts on the going home tours. The New York, Susquehanna & Allegheny Railroad boasts 1200 engines and 12,000 cars. (Granted, some were in cases lining the wall). It was scenicked and detailed extensively.

Now it's our turn! During the next four months, we're going to ensure we are ready to show the folks coming to Keystone Junction why we're the number one convention in the MER. Watch for more details, and thanks for all the hard work. See you at the meet!

Happy Railroading!

Timothy J. Palmer

Superintendent, Philadelphia Division

## Attention Delaware NMRA members!

At the annual board meeting of the MER Board of Directors, there was considerable discussion about the upcoming single dues structure. While this change will simplify the renewal process (one check for all three dues, National, Region, and Division), the question remains what to do about areas that are not represented by a Division.

The directors of the Philadelphia Division would like to know if NMRA members in the state

Delaware would like to be represented by the Philadelphia Division. We already have a number of members from the area, and have hosted a several meets there in the past.

If there is sufficient interest we will petition the Region to allow us to proceed. We will have a petition available at the November meet, so please consider this option. If you have any questions please contact one of the Division officers.

## Philadelphia Division New Modeler Award

**What is it?** The Division will sponsor an award to be given to a first-time modeler entering an NMRA sponsored model contest at a Mid-Eastern regional convention. This award will be called The Philadelphia Division New Modeler Award. To encourage all NMRA modelers but especially Philadelphia Division modelers to participate in model contests. To grit their teeth and boldly move to show others that one's modeling skills should not lie dormant but instead be displayed for others to judge, learn from, and admire.

**An example of similar Regional award:** Sunrise Trail Division, NER – New Modeler Award – given to the highest score by a first time entrant in an NMRA National or any Regional Model Contest.

**Who can participate?** Any current NMRA, MER, and Philadelphia Division member.

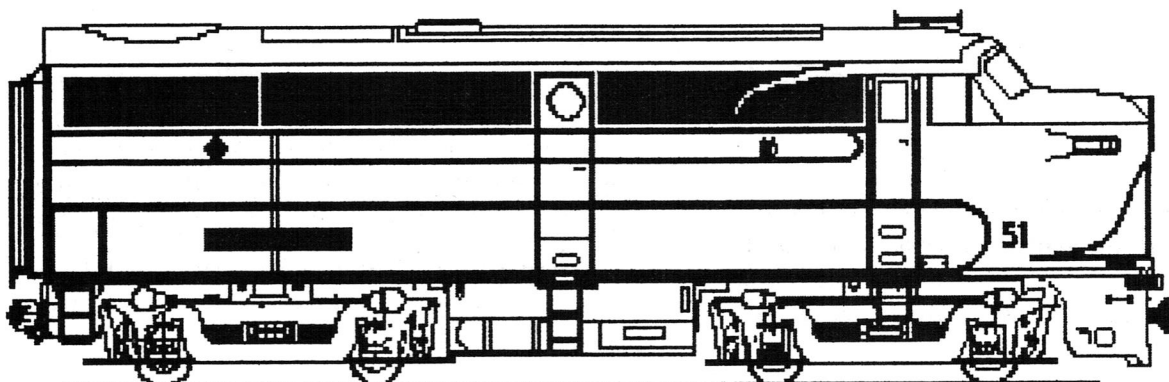
**How will the Award be administered?** The model must be entered in an NMRA sponsored model contest at an MER regional convention. A modeler who has never before entered an NMRA sponsored model contest either at the national or regional level must enter the model. The model contest must be a judged contest using current NMRA judging guidelines. The new modeler, whose entry receives the highest score regardless of category in the model contest, will win the award.

**Division Officials and the Award:** If you wish, the Division AP Chair and/or the MER Model Contest Chair, can assist in judging the Award. A Division Officer, or someone designated by the Superintendent, can also assist in administering the paper work for the Award.

**The Award:** The modeler whose work qualifies for this Award, i.e. the model receiving the highest score among first-time entrants, will be given the Philadelphia Division New Modeler Award. The Award will include: a cash prize presented by the Philadelphia Division; an engraved plaque presented by the Philadelphia Division; as well as a New Modeler Award certificate presented by the MER.

**How the Award will be presented:** *The Philadelphia Division New Modeler Award* will be presented to the winner at the awards ceremony following the banquet at each MER Convention. The Division Superintendent or a representative that he/she might appoint might give the award to the winner; or the official (usually the MER General Contest Chairman) could give the award whose duties includes handing out awards.

**The Philadelphia Division New Modeler Award** must be presented to, and approved by, the MER Board of Directors. Eric Dervinis suggested the Division put a two-year time limit on the Award. The BOD seems to like two-year limits on awards. The Award can be renewed.



Ken Houghton

### On-Site Train Show

In the tradition of past Philly Division conventions, we are pleased to once again include an on-site Sunday Train Show with over 70 dealer tables. The show, sponsored by the Philly Division, will be open to convention attendees for one hour before the general public, and will also include our signature Kids Korner, a place to bring the kids for various children's activities while you shop for trains! And, best of all, it's FREE to all convention attendees.

### Buffet

Rather than a traditional banquet as we've come to know them, KJ '01 will feature a come when you want, with whom you want, and eat all you can eat "Taste of Philly" buffet – featuring Tastykakes, soft pretzels, and *real* Philly cheese steaks. In other words real Philly Health food. Awards activities are planned to begin at the conclusion of the buffet.

### On Site Modular Layout

For your viewing pleasure, there will be an on-site modular layout set up throughout the weekend.

### SIGs

We anticipate a large turnout of members of the Layout Design, Operations, and Railroad Industries SIGs and a number of activities are currently being planned. There will be a room set aside for SIG use. If you are a member of a SIG and would like to participate or have some display space, please drop a note to the convention manager in care of the address on the registration form.

### Off-Line Activities

Exciting off-line activities are planned, so bring your spouse and kids along for a memorable weekend. Your registration fee includes a keepsake bag filled with goodies. Among the activities planned are:

**Longwood Gardens:** Guided tour and free time in the world's premier horticultural display garden. This Friday, March 30<sup>th</sup> extra fare (\$20.00 adult,

\$10.00 child) will be the highlight of the convention for any gardeners.

**QVC Studio Tour:** A one of a kind guided walking and shopping tour through the world of electronic marketing, this extra fare (\$15.00) trip in the morning on Friday, March 30<sup>th</sup> includes admission and transportation.

**Brandywine River Museum:** Featuring the works of the Wyeth family and Howard Pyle, this unique showcase of American art housed in an historic 19<sup>th</sup> century grist mill will warm the heart of any art lover. This extra fare tour (\$10.00 adult, \$7.50 child) will take place on Friday, March 30<sup>th</sup> in the afternoon.

**New Hope:** Called the antique capital of the east, New Hope is sure to have a shop to cater to your every whim. This extra fare all day trip (\$15.00 adult, \$10.00 child) will take place on Saturday, March 31<sup>st</sup>, and will be part of the New Hope & Ivyland fantrip. Fare does NOT include train ride. To include the train ride in your day, please select the fantrip option.

**King of Prussia Mall:** The east coast's largest mall is only a short, free van ride away.

### Directions to Keystone Junction '01

**From the South:** Follow I-95 North into Wilmington DE and exit onto US 202 North. Continue on 202 N into Pennsylvania until the intersection of Routes 202 and 30. Take the exit for 30 east. The Sheraton Hotel will be on your left. Approximate travel time from Wilmington is 20-25 minutes.

**From the West:** Exit from the Pennsylvania Turnpike at exit 23, Downingtown, and head South on Route 100 to the Route 30 bypass. Turn left onto Route 30, and follow to the first exit. Take 30 east, and the hotel will be on the left.

**From the East:** Exit from the Pennsylvania Turnpike at exit 24, Valley Forge, and head South on Route 202. Continue on 202 South until the junction with Route 30. Take Route 30 East (not 30 bypass), and the hotel will be on the left immediately after the Route 202 overpass. Turn left into the hotel.

**Keystone Junction '01**  
**Mid Eastern Region, NMRA Spring Convention**  
**March 29, 30, 31 & April 1, 2001 Frazer, PA**



Names as you wish to have them appear on your badges:

---



---



---

Address Street: \_\_\_\_\_  
City: \_\_\_\_\_ State: \_\_\_\_\_ ZIP: \_\_\_\_\_  
Phone: \_\_\_\_\_ NMRA# \_\_\_\_\_ MER # \_\_\_\_\_  
E-Mail: \_\_\_\_\_

	Amount	Total Cost
Full Registration	@ \$35.00	
Non-NMRA Member Fee	@ \$10.00	
Spouse	@ \$15.00	
Children (under 12)	@ \$ 5.00	
151 Taste-of Philly Buffet (Adult)	@ \$20.00	
152 Taste-of Philly Buffet (Child)	@ \$10.00	
153 Optional Box Lunch	@ \$ 5.00	
201 DCC Clinic	@ \$10.00	
301 Septa's Frazier Shops	@ \$15.00	
302 Amtrak 30 <sup>th</sup> Street Station	@ \$10.00	
303 NH&I Fan Trip (Adult)	@ \$25.00	
304 NH&I Fan Trip (Child)	@ \$15.00	
401 Lukens Steel	@ \$25.00	
402 PECO's Eddystone Station	@ \$15.00	
501 Convention Car (Single)	@ \$15.00	
502 Convention Car (3 Pack)	@ \$40.00	
503 Additional Convention Pin	@ \$ 5.00	
504 Convention Shirt	@ \$10.00	S M L XL XXL
601 Operations Call Board (Fri-EVE)	@ \$18.00	
603 Operations Call Board (Sat-AM)	@ \$18.00	
604 Operations Call Board (Sat-PM)	@ \$18.00	
701 Longwood Gardens (Adult)	@ \$20.00	
702 Longwood Gardens (Child)	@ \$10.00	
703 QVC Studio	@ \$15.00	
704 Brandywine River Museum (Adult)	@ \$10.00	
705 Brandywine River Museum (Child)	@ \$ 7.50	
706 New Hope (Adult)	@ \$15.00	(No Train Ride)
707 New Hope (Child)	@ \$10.00	(No Train Ride)

**Total FEES Enclosed \$** \_\_\_\_\_

Make Checks payable to: **Keystone Junction '01 • PO Box 447 • Swedesboro, NJ 08085**  
For convention information call 856-467-3385 or e-mail [keystonejunction@mindspring.com](mailto:keystonejunction@mindspring.com)

P. J. Mattson Registrar

All Activities are ala cart including the Banquet.

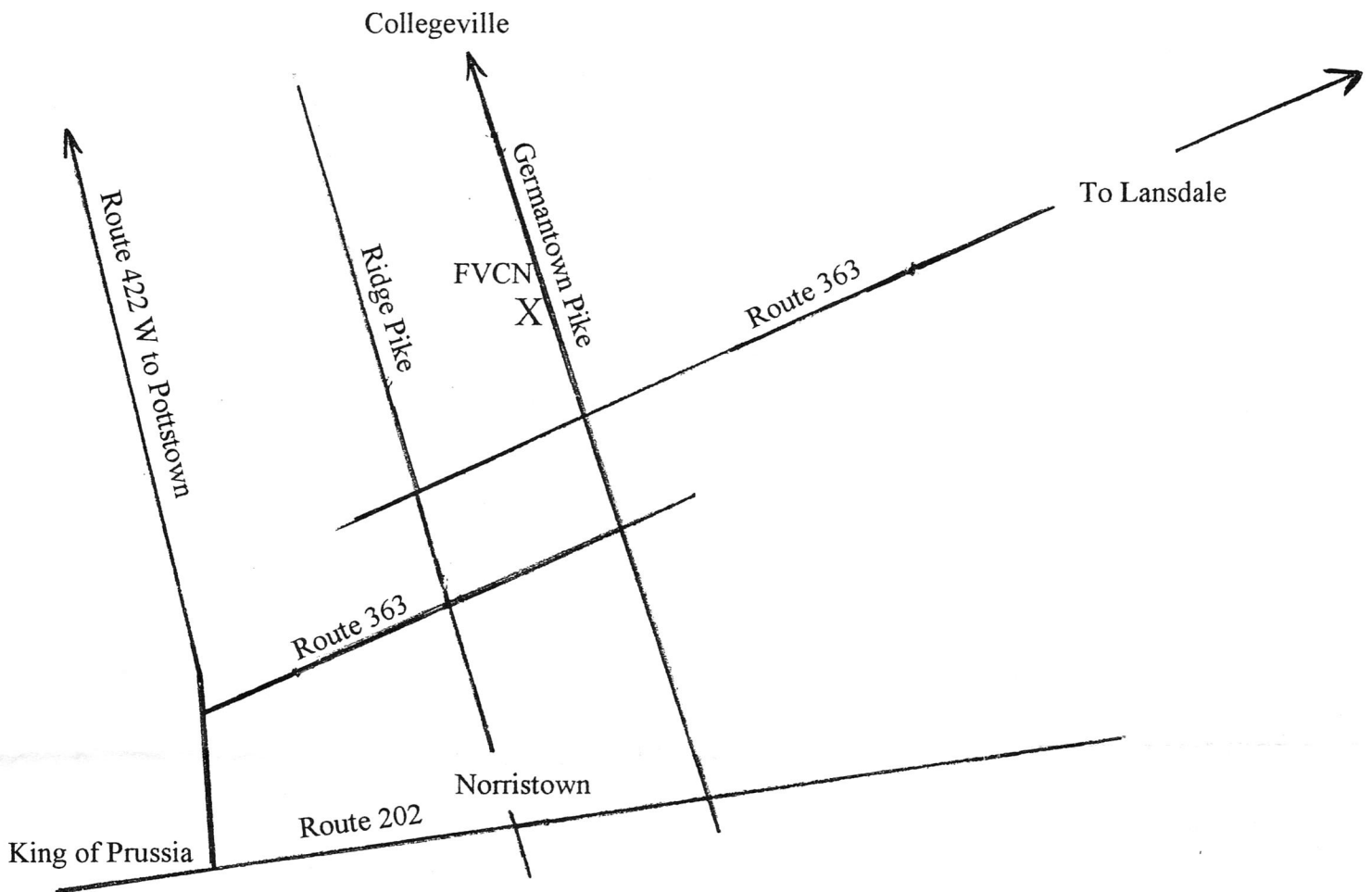
Parking is FREE at the Hotel.

Payment must accompany registration form. Bounced checks will not be put through twice - you will be required to pay your entire fee by money order or cashier's check through the mail or in cash at the convention. You will be responsible for all bank fees charged. DO NOT enclose hotel room reservation requests with your registration. If you pre-register and later need to cancel, a full refund will be given only if the request is received by the registrar in writing by March 15, 2001. Allow 4 to 6 weeks for processing of your refund. DO NOT mail a registration after March 15, 2001; register at the door. DO NOT staple your check to your registration form. Call (856)-467-3385 for a recording of current changes and updates. All activities are subject to change, substitution, addition or cancellation.

**Sheraton Great Valley Hotel 707 Lancaster Pike Frazer PA 19355 610-524-5500**  
**\$85.00 Single/Double + Tax Room Types: King Bed, 2 Double Beds, Smoking/Non Smoking**  
Please contact the Hotel to make reservations. Mention Mid-Eastern Region NMRA



## November Meet Directions



## Schedules

The Philadelphia division is pleased to offer the following activity dates for your planning. If you have an item you would like included, please contact the editor. They will be included on a first come, first served space available basis.

See a 50' by 60' HO & Hon3 Scale view of '50s railroading in the Northeastern United States. Many museum quality buildings and trains will be on display and operating. Located in Fort Washington, PA and open the following dates: November 18<sup>th</sup> & 19<sup>th</sup>, December 1st & 2nd, January 6<sup>th</sup>, 7<sup>th</sup>, 20<sup>th</sup>, and 21st. GATSME Lines open house in the basement of the New Horizons Montessori School, Prospect and Madison Avenues, 12 Noon to 4 PM. Admission by donation. For info: Ed Wilson or Paul Bryant at 215-646-22033 on Thursday evenings. GATSME is a non profit organization.

Chelton Hills Model Railroad Club will be holding its annual Open House and Show on the following dates: November 25<sup>th</sup> & 26<sup>th</sup>, 2000, and January 6<sup>th</sup>, 7<sup>th</sup>, 13<sup>th</sup>, &

14<sup>th</sup>, 2001. The club is located at 8100 Old York Road in Elkins Park, PA 19027. For additional information and directions please call 215-635-9747. We also have a website to visit at: <http://home.att.net/~rarkowitz>

New Jersey Division NMRA events.  
Saturday November 4<sup>th</sup>, 2000. 4-H Club Building  
Galloway Township NJ (Atlantic City/Hammonton area)  
January 19 – 20, 2001.  
Haddon Twp. High School  
Haddon Twp, NJ

Keystone Junction 2001  
See details else where in this issue.

## Discounts for Division Members at Local Hobby Shops

Be sure to patronize the area's hobby shops that are now offering discounts on model railroading purchases to members of the Philadelphia Division.

### **Kenwood Model Hobbies**

Various train shows throughout the division  
10% discount  
Call (610) 532 2253 for details

### **Iron Horse Hobby Shop**

60 S. 6<sup>th</sup> St. in Reading  
10% discount with \$10 min purchase

### **Nick Logothetis**

(Abracadabra)  
2 Buck Run  
Thornton, PA 19373  
(610) 399 3469

### **Mitchell's Family Store**

2119 Concord Pike (202) in Wilmington DE  
10% discount on train department items

### **Herb's Hobbies and Crafts**

200 W. State St. in Doylestown  
\$25 of free merchandise for every \$250 spent

### **Nicholas Smith Trains**

2343 West Chester Pike (3) in Bromall  
10% discount (excludes O & G items)

### **Lin's Junction at Henning Scale Models**

128 South Line St.  
Lansdale, PA 19446  
5% in addition to already discounted prices

### **Bussinger Trains**

Old Ambler Station, Ambler  
10-12% off retail

## The Philadelphia Dispatcher

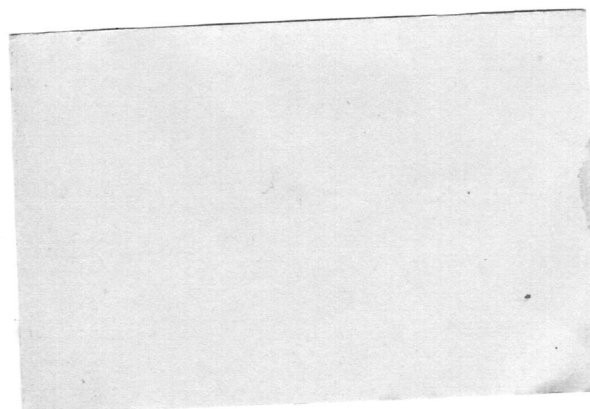
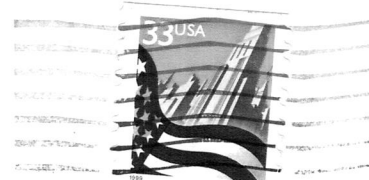
Official publication of the Philadelphia Division  
of the National Model Railroad Association

P.O. Box 378

Devon, PA 19333

Inside: November Meet  
Keystone Junction  
New Modelers Award  
And more!

Do you need to renew? If the date on your mailing label is highlighted, please renew promptly. Thank you for renewing promptly.



15025+1512