



THE PHILADELPHIA DISPATCHER

Official publication of the Philadelphia Division
of the Mid-Eastern Region,
National Model Railroad Association

June 2005
Volume 12, Number 3

The Philadelphia Division is pleased to announce that we will be holding our next meeting on Saturday, June 11th, at Saint Albans Church. The church is located at the intersection of Route 252 and Chapel Road in Newtown Square, PA. Please see page 7 of this issue of the Dispatcher for a map.

The doors will open at 9:30 for registration, with the meet beginning at approximately 10:00 AM.

At our last meeting in April, member Rich Newmiller gave a fascinating presentation on how he built his model of the yard office at Orbisonia on the East Broad Top Railroad. At this meet you will have the opportunity to try your own hand at carving rock walls! Rich is preparing blanks for you to practice on. This hand's on clinic will be a great opportunity for you to learn a new modeling skill. Please see page three of this issue for some items you will need to bring!

Due to a scheduling problem, our planned second clinic is unable to attend. The board is working on some alternatives, but at press time no decision has been reached. One of the alternatives being looked at is a track planning clinic, so make your

plans now to see what the mystery clinic will be!

Our popular vote contest for this meet will be yard structure. Any size and shape building that would be found located in a prototype yard is eligible for entry. This could be as simple as an old freight or passenger car placed on the ground and used for storage, a yard tower, or a roundhouse! The choice is yours.

During the afternoon following the conclusion of the meet, the StARR Model Railroad Club will be set up for an operating session. So make your plans now to attend this exciting event.

New Division bylaws!

Beginning on page 4 of this issue of the Dispatcher you will find a draft copy of the proposed new bylaws for the Philadelphia Division. These are needed to bring the division into compliance with the new National and MER bylaws that are expected to be in place by September of this year. Please take time to look them over carefully. During the next two meets time will be set aside for you to ask questions about the proposed changes to the bylaws. After the discussion at the

September meet a vote will be taken to accept or reject these bylaws. Please review them carefully and come to the September meet to cast your vote!

Schedules

July 3 – 9: Cincinnati Limited. The NMRA National Convention, Cincinnati, Ohio. Clinics, layout tours prototype tours, model contest, non rail and more. For information see NMRA Scale Rails or visit www.cl2005.com.

June 25 & 26. Great Scale Train Show. Timonium Fairgrounds, Timonium, Md.

September 17th: Philadelphia Division Meet. Fairview Village Church of the Nazarene, 3060 Germantown Pike. Meeting to be in the Barn. Clinics, Layout tours, contest: Caboose. Doors open 9:30

Important Election Information

Please see page 2 of this issue for a list of candidates for the board of the Philadelphia Division. Balloting will be held at the September meet.

For this issue, my ramblings will be turned in a little different direction. The Division is a little late in following the current bylaws in that we haven't had an election in a couple years and the current board is, well, technically a lame duck. On top of that we have new bylaws in the works to bring us into conformance with the new NMRA bylaws. Confused yet? This isn't intended to poke fun at the board mind you; they have just been having so much fun serving you that they didn't want it to end. But all good things must come to an end. Now it's time to move on to a little more serious information.

The board is pleased to present the following list of candidates for your consideration. Each of them has met the requirements of both the old and new bylaws, and has expressed an interest in serving. As per the bylaws, 7 individuals will be elected to the board, and from them the board will elect a Superintendent, Assistant Superintendent, Clerk, and Treasurer. The election will take place at the September meet, and if you are unable to attend, an official ballot will be included in the September issue of the Dispatcher.

If you wish to place someone else's name on the ballot, it must be done in writing with the names of three division members and the nominee's consent.

The following candidates are presented for your consideration:

Brain Good: Brian has been a division member for two years, and serves as the Fan trip Manager for Independence Junction '06

Dick Foley: Dick has been a division member for many years, is currently a board member, and serves as Prototype Tour Manager for IJ '06.

Dick Landt: Dick has been a member for many years, is currently on the board and is the division treasurer, and serves as the Food and Beverage Manager for IJ '06

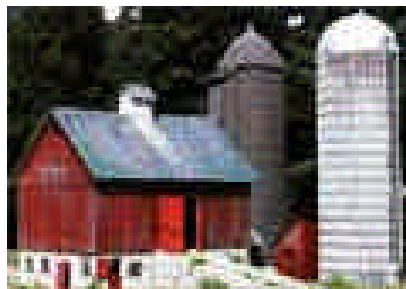
Dave Messer: Dave has been a member for years, is currently a board member, and serves as General Manager for IJ '06

Jim Dalberg: Jim has been a member for years, is the current superintendent, and is the LD SIG co-ordinator for IJ '06

Steve Salotti: Steve has been a member for years, is the Dispatcher editor, the division clerk, and the Outside Activities Manager for IJ '06

Val Pistilli: Val has been a member for years, and is the division web master, including hosting the site for IJ '06

These names are presented for your consideration. If you are interested in serving, the board would be glad to add your name to the ballot. The official Ballot will be included in the next issue of the Dispatcher, so any nominations must be received by August 15th.



THE PHILADELPHIA DISPATCHER

Official publication of the Philadelphia Division, Mid-Eastern Region,

National Model Railroad Association

Editor

Stephen F. Salotti
46 Meadow Road
Collegeville, Pa, 19426
(610) 489 1940

Submissions: The PHILADELPHIA DISPATCHER welcomes any model railroad- or railroad-related material. Members are encouraged to send in articles, letters to the editor, reviews, etc. Submissions are preferred typed, double-spaced. The editor reserves the right to, when necessary, paraphrase small portions of the text in order to fit the space available.

Next issue: Sept. 2005. Due out approx Sept. 2nd. Deadline: August 15th.

Membership: \$7.00 per year. Address all membership applications, renewals, address changes, etc. to the Clerk. If the date in the upper-right corner of your mailing label is highlighted, your membership will expire soon. Please pay at the next meet or mail payment to the Clerk. Make checks payable to "Philadelphia Division, NMRA."

Division Personnel:

Superintendent
Jim Dalberg
529 Foxwood Lane
Paoli, PA 19301
(610) 648 0089

Assistant Superintendent

Tim Palmer
724 Oak Avenue
Magala, NJ 08328
(610) 999 7389

Clerk

Stephen F. Salotti
46 Meadow Road
Collegeville, PA 19426
(610) 489-1940
jmsfca@aol.com

Treasurer

Dick Landt
561 Beck Road
Souderton, PA 18964

Achievement Program Coordinator

Dave Messer, M.M.R.
263 Mingo Road
Royersford, PA 19468-3112
(610) 948-2191

Module Team Foreman

Tom Cancelmo
238 Jackson Avenue
Lansdowne, PA 19050
(610) 259-7216

Mid-Eastern Region, N.M.R.A.

9 Roosevelt Ave
Wilmington DE 19804-3044
(302) 636 0888

merbusmanager@msn.com

Dues: \$8.00 per year

National Model Railroad Association

4121 Cromwell Road
Chattanooga, TN 37421-2119
(615) 892-2946

Dues: \$45.00 per year

From the Superintendent

Divisionnaires:

We had a very good meet in April. I was very pleased with the member turnout, considering that it was one of the first nice Spring days. Thanks to Dick Landt for arranging the space; the clinicians, Rich Newmiller and Mike Baker, and everyone else that helped, including those who opened their layouts in the afternoon. I got a couple of ideas from these visits which will stand me in good stead when I extend my Reading line to Harrisburg across an aisle and will need an easy and reliable lift-up section. These visits are always fun; it is interesting to see what others have done.

It is again the time to talk about the subject of your Division Board of Directors. We are looking for a Few (new) Good Members. I have not received any calls. In a word, the response has been underwhelming.

As you know, the Board consists of seven members, elected from the Division membership. As you also know, it is difficult in organizations such as ours to get people to volunteer—I'd guess the active portion of the

population in groups like this is 10-20% of total membership, and this may be a high number. From the elected members a Superintendent, Assistant Superintendent, Clerk and Paymaster are appointed. Other jobs are to line up clinics, for example.

Being on the Board is not hard work-it entails 2-4 meetings a year, mainly to plan the Division meets, so that for you, the membership, they are enjoyable, organized, with no last minute frenzies. We have to plan these out, especially dates, as it is becoming more and more difficult to line up meeting space without a fairly long lead time. So, how about volunteering? Call me, or Steve Salotti, or any other Board member, and throw your hat into the ring. (I like these military metaphors).

See you all at the June Meet,

Jim

Hands-on Clinic: Modeling with plaster

For years, most modelers have been working with plaster to build scenery elements. In addition, there are several manufacturers that sell structure kits in which some or all of the components are made from plaster. And, recently the monthly magazines have had several articles on modeling with plaster. However, for a variety of reasons, the vast majority of modelers do not work in plaster.

The goal of this clinic is to demonstrate several techniques and allow the individual modeler to gain some experience and a level of comfort in working with plaster. The six specific activities are as follows:

1. Carving plaster stonework
2. Cutting plaster slabs
3. Cutting out a window opening
4. Base coloring
5. Carving a brick chimney
6. Making individual building stones for foundations or retaining walls.

The above skill sets will allow the modeler to make unique building walls without visible corner joints and retaining walls, portals or arches in almost any size or shape.

The presenter will provide the plaster slab, a saw and drill for cutting, the stone artwork, carbon paper, a double hung window for use in a masonry opening, coloring liquids and the universal building stone maker (yours to keep). The work will be done in HO scale. However, the modeler can change the scale by increasing or decreasing the size of the individual stones or bricks.

The attendee should bring three sheets of newspaper (covers work surface and collects dust for ease of clean-up), hobby knife with a #11 blade (or similar), pencil, masking tape, a dental pick for carving (this could also be a scratch awl, dull knife blade, etc.), large flat file (8" to 10" long), small file or emery board (3/8" max width – OK to cut emery board in half lengthwise), small square, scale ruler, white glue, a stiff brush to clean plaster dust off plaster slab and the file faces and 3 or so paper towels. An Opti-visor or other magnifying glass may be desirable.

DRAFT

Bylaws of the Philadelphia Division Mid-Eastern Region, National Model Railroad Association

(Adopted by the Division xx/xx/xxxx)

Article I

Name, Status, and Purpose

1. The name of the organization is the Philadelphia Division (the "Division"). It is established under the provisions of the Bylaws of the Mid-Eastern Region (MER), and the Regulations of the National Model Railroad Association (NMRA). If a conflict should develop between these Bylaws and the Regional Bylaws and/or the NMRA Regulations, the Regional Bylaws or the NMRA Regulations will govern.
2. The Division is organized to promote educational, charitable, historical, and fellowship activities related to model railroading and rail transportation.

Article II

Territory

1. The Division includes Bucks, Delaware, Chester, Montgomery and Philadelphia Counties in the Commonwealth of Pennsylvania as well as Kent, Sussex and New Castle Counties in the State of Delaware.

Article III

Fiscal Year

1. The Division fiscal year will be from July 1 to June 30 of the following year.

Article IV

Membership, Dues, and Finances

1. In general, each NMRA member is automatically a member of the Region, if one exists, and of the Division, if one exists, in whose territory the member resides.
2. The MER will receive an annual allocation of dues money from the NMRA. In turn, the MER will allocate a portion of this dues money to each active MER Division following the guidelines in the NMRA Regulations. No additional dues will be required for Division membership for NMRA members who reside within the Division's territory.
3. Except for voting and holding a Division office, all NMRA members, regardless of residence, are entitled to attend or participate in any activity of the Division.
4. The Division Board of Directors may choose to charge fees for specific activities and services such as meets, conventions, tours, open houses, and a mailed copy of a publication. For such activities, the fees will be the same for all NMRA members, regardless of residence.
5. Guest attendance privileges may be granted to model railroaders to introduce them to Division, MER and NMRA activities. However, no one may consistently attend Division activities without joining the NMRA.

Article V

Voting and Office Holding Rights

1. All Division officers, members of the Board of Directors and officials must be members of the Division.
2. To vote or hold office in the Division, members must live within the Division's territory.
3. Each voting member will have one vote at any meeting of the members.

**Article VI
Board of Directors**

1. There will be a Board of Directors (the "Board") of the Division that will supervise and control the business, property and affairs of the Division, except as otherwise provided by law or these Bylaws.
2. The Board will consist of the Superintendent, the Assistant Superintendent, the Clerk-Paymaster and four Members at large (at the discretion of the Board, the Clerk-Paymaster position may be split into two positions). The Board will elect these officers from the Board of Directors.
3. The Board will hold at least four regular meetings each year at times, days and places designated by the Superintendent. Notice of the time, day and place will be given to each Board member at least fifteen (15) days in advance.
4. Special meetings may also be held at the request of the majority of the members of the Board.
5. Voting by proxy is not permitted. However, one or more members of the Board may participate in a Board meeting by means of a conference telephone or similar telecommunications device that allows all participants to hear each other.
6. A majority of the Board members will constitute a quorum for the transaction of business.
7. No officer or Board member will receive any remuneration of any kind for his or her services. However, they may be reimbursed for reasonable expenses incurred, with the approval of the board and upon presentation of a written request.
8. Unless otherwise stated in these Bylaws, *Robert's Rules of Order* will govern the conduct of board meetings.

**Article VII
Duties of Officers and Board Members at Large**

1. The Superintendent will preside over Division and Board meetings, and will perform the usual duties of the head of a nonprofit organization. He or she will be an *ex officio* member of all committees except the Nominating and Audit Committees.
2. The Assistant Superintendent will act as Superintendent when the Superintendent is absent or otherwise unable to serve, and will perform any duties assigned by the Superintendent.
3. The Clerk-Paymaster will serve as the Division secretary and the treasurer. Duties will include: taking minutes at all meetings, maintaining a roster of active members, maintaining the Division's records, sending notices of meetings, receiving and disbursing funds, and preparing financial reports.
4. Board members at large will perform tasks assigned to them by the Superintendent.

**Article VIII
Vacancies**

The Assistant Superintendent will succeed the Superintendent in case of resignation or incapacitation. The Superintendent will appoint a replacement in the case of resignation or incapacitation of any other member of the Board.

**Article IX
Conflict of Interest**

No Board member will cast a vote, or take part in the final deliberation, on any matter in which he or she, or members of his or her immediate family, have a personal financial or other interest.

**Article X
Committees and Officials**

The Superintendent will appoint the following committees and officials:

1. A Nominating Committee of two or more members, at least one of whom will be a board member or recent board member. Duties of this committee are described in a later section of these Bylaws.
2. An Audit Committee of two or more members. This committee will conduct an annual financial audit of the Division's books at the end of each fiscal year, and when a new Clerk-Paymaster takes office, reporting the results to the membership at a membership meeting or in the Division's official publication. Neither the Superintendent nor the Clerk-Paymaster may serve on this committee.
3. An Editor for the official publication of the Division.
4. An Achievement Program Coordinator. This appointment will be made with the advice and counsel of the MER Achievement Program Manager.
5. Other committees as needed to carry on the activities of the Division.

**Article XI
Membership Meetings**

1. Membership meetings will be held at such times and places as may be determined by the Board.
2. The Superintendent will call special meetings upon written application of ten (10) percent of the members or a majority of the Board.
3. The annual meeting of the Division will be held in May or June of each year to hold elections and conduct other appropriate business. Date, time and location will be communicated to all members at least fifteen (15) days ahead of time.
4. Proxy voting is permitted on any issue where advance notice is sent to all members, such as referendums, changes in the Bylaws, or election of officers. Proxies will be sent to the Clerk-Paymaster, who will vote them as directed.
5. At any membership meeting, twenty (20) members (in person or by proxy) will constitute a quorum for purposes of voting on items announced in advance. Twenty members (in person) will constitute a quorum for other purposes.
6. Unless otherwise stated in these Bylaws, *Robert's Rules of Order* will govern the conduct of membership meetings.

**Article XII
Terms of Office, Nominations, and Elections**

1. The Superintendent, Assistant Superintendent, and Clerk-Paymaster will serve two-year terms starting in even-numbered years. The Board Members at Large will serve two-year terms starting in odd-numbered years.
Note: During the first election under these Bylaws, the members shall elect all seven Directors. Of these the four with the most votes will serve for two (2) years, and the three with the fewest votes will serve for one (1) year.
2. None of the foregoing seven people may serve in the same capacity for more than two full consecutive terms.
3. No one may fill more than one of the foregoing seven positions simultaneously except for brief transition periods.
4. In preparation for each year's annual meeting and election, the Nominating Committee will solicit candidates, explaining the requirements of the position. In addition, any three members may nominate someone via a written notice to the Nominating Committee, with the permission of the nominee. Such nominations must be submitted to the Nominating Committee at least thirty (30) days ahead of the election.
5. The names of candidates for office will be communicated to the membership at least fifteen (15) days before the election.
6. If contested, the election will be conducted by the Nominating Committee Chair at the annual meeting via secret ballot. Ballots will be counted and results announced before the close of the meeting. Positions will be filled by a simple plurality of votes.
7. Members elected will take office on July 1.

**Article XIII
Indemnification**

By resolution of the Board, the Division may indemnify any officer, board member, or agent against any and all expenses and liabilities incurred by him or her in connection with any claim, action, suit, or proceeding to which he or she is made a party by reason of being an officer, board member, or agent.

**Article XIV
Amendments**

These Bylaws may be amended by two thirds vote of the members present at the annual meeting or a special meeting, provided there is a quorum. The proposed amendment must be communicated to all members at least fifteen (15) days before the meeting.

**Article XV
Referendums**

Ten percent of the members may create a referendum issue to be voted on at an annual or special meeting where a quorum is present by submitting their request in writing to the Clerk-Paymaster. The referendum must be communicated to all members at least fifteen days in advance. Removal of an officer or a change in the Bylaws require a two thirds vote of the people present (in person or by proxy). Other issues require a majority vote of people present (in person or by proxy).

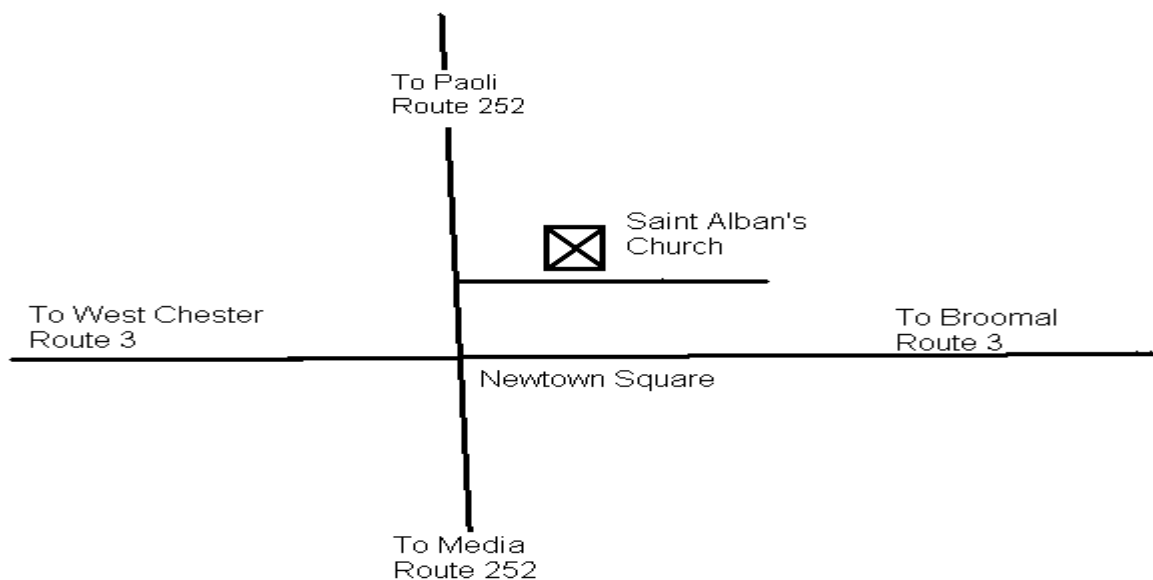
**Article XVI
Dissolution**

The division will be considered dissolved when any one of the following events occurs:

- A motion for dissolution is adopted in the same manner as is provided for amendment of the Bylaws, or
- No meetings of the Division are held or scheduled for twelve months, or
- The Division charter is revoked by the MER.

Upon dissolution, the last elected officers and directors will pay all outstanding bills, and promptly forward all assets and records to an MER official designated by the MER President. If the MER is unable or unwilling to receive the assets, they will be donated to another 501-c-3 organization whose purpose is generally consistent with that of the Division.

Map to Saint Alban's Church



The Philadelphia Dispatcher

Official publication of the Philadelphia Division
of the National Model Railroad Association

46 Meadow Road

Collegeville, PA 19426

Inside: Division Meet
 New Bylaws
 June Clinic

Do you need to renew? If the date on your mailing label is highlighted, please renew promptly. Thank you for renewing promptly.

Discounts for Division Members at Local Hobby Shops

Be sure to patronize the area's hobby shops that are now offering discounts on model railroading purchases to members of the Philadelphia Division.

Kenwood Model Hobbies

8436 Perry Hwy, Rt. 19

Pgh., PA 15237-5228

10% discount

(412)-364-2913

Herb's Hobbies and Crafts

200 W. State St. in Doylestown

\$25 of free merchandise for every \$250 spent

Iron Horse Hobby Shop

60 S. 6th St. in Reading

10% discount with \$10 min purchase

Nicholas Smith Trains

2343 West Chester Pike (3) in Bromall

10% discount (excludes O & G items)

Jenkintown Train & Hobby

Greenwood Ave & Leedom St

Jenkintown, PA 19046

10% in addition to discounted prices

Lin's Junction

128 South Line St.

Lansdale, PA 194446

5% in addition to already discounted prices

Mitchell's Family Store

2119 Concord Pike (202) in Wilmington DE

10% discount on train department items

Bussinger Trains

Old Ambler Station, Ambler

10-12% off retail